



Characterising rural societies: methodologies and frameworks

- Practical -

Tristan Berchoux

Tristan.Berchoux@winchester.ac.uk

Understanding Urban and Rural Societies

BA (Hons) Sociology

BSc Geography

7 March 2017

Main Contents

Overview of the presentation

- ① Livelihood thinking and the SLF
- ② SLF in practice
- ③ Short practical
- ④ Discussion

Livelihood thinking

Context of emergence and core concepts

Emergence

- Mid 80's †Chambers (1983), Chambers & Conway (1991), Scoones (1998)
- Top-down approach of poverty in development discourses
- Rural dwellers rely on a multitude of activities for their income

Definition

“System that gathers capabilities, assets and activities of one household in order to achieve its means of living.”

Chambers and Conway, 1991

Household as the reference unit for decision-making

- Shared residence and meals
- Joint decisions over resource allocation and income pooling

Livelihood thinking

Context of emergence and core concepts

Emergence

- Mid 80's †Chambers (1983), Chambers & Conway (1991), Scoones (1998)
- Top-down approach of poverty in development discourses
- Rural dwellers rely on a multitude of activities for their income

Definition

“System that gathers capabilities, assets and activities of one household in order to achieve its means of living.”

Chambers and Conway, 1991

Household as the reference unit for decision-making

- Shared residence and meals
- Joint decisions over resource allocation and income pooling

Livelihood thinking

Context of emergence and core concepts

Emergence

- Mid 80's †Chambers (1983), Chambers & Conway (1991), Scoones (1998)
- Top-down approach of poverty in development discourses
- Rural dwellers rely on a multitude of activities for their income

Definition

“System that gathers capabilities, assets and activities of one household in order to achieve its means of living.”

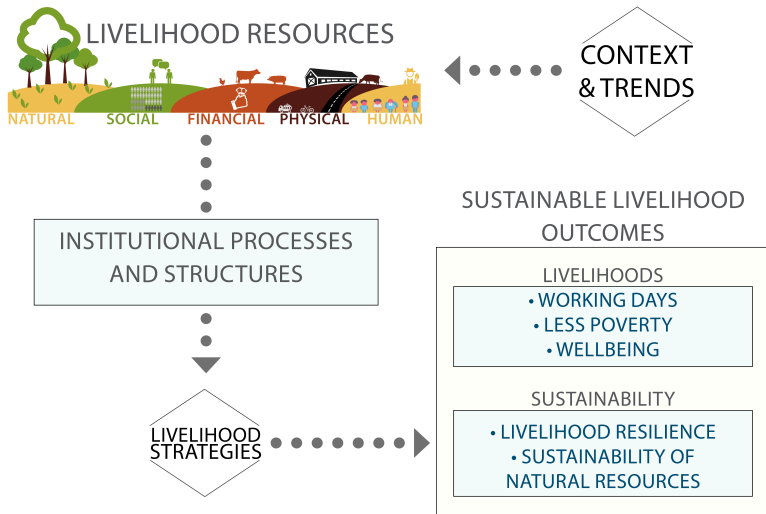
Chambers and Conway, 1991

Household as the reference unit for decision-making

- Shared residence and meals
- Joint decisions over resource allocation and income pooling

The Sustainable Livelihood Framework

Scoones, 1998



Qualitative

- Semi-structured interviews *x13*
 - ▶ Public Institutions
 - ▶ Universities
 - ▶ Programmes and NGOs⊙ State level
- Participatory Rural Appraisals *x10*
 - ▶ Resource map Social map Wealth ranking Seasonal calendar
 - ▶ Impact chain of natural hazards Photovoice⊙ Community level
- Seminars for validation and feedback
- Political economy analysis

Quantitative

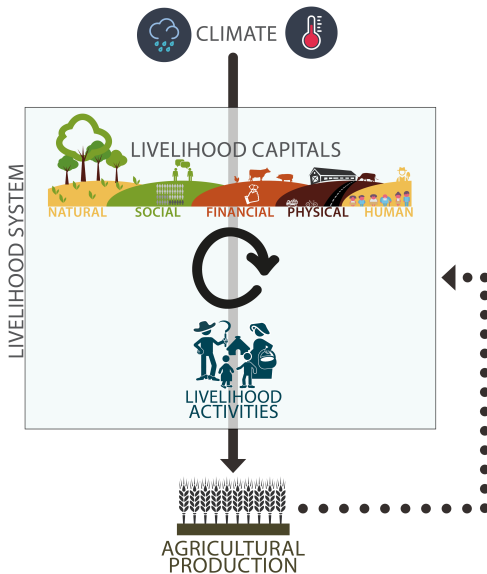
Qualitative

Quantitative

- Census data and OSM
 - ▶ Maximum Likelihood Factor Analysis for building indices
 - ▶ Data clustering
- Remote sensing
 - ▶ Climate variability
 - ▶ Agricultural stresses

SLF in practice

Adapted conceptualisation



Exercise in pairs

Identify one additional indicator to each capital

Natural capital

- Agricultural land
 - ▶ Size of land per household
 - ▶ Ownership status
 - ▶ Characteristics
 - ▶ Irrigation
- Open-water resources
- Forest resources

Physical capital

- Road connectivity
- Proximity to an outlet
- Access to productive assets

Financial capital

- Protective assets
- Access to financial services

Human capital

- Male workforce availability
- Skills of household members
- Access to health facilities

Social capital

- Social networks
- Castes ratio

Identify one advantage and one disadvantage of the SLF.

Discussion

Strengths and limitations of the SLF

Strengths

- Focus on what households have, their needs and their interests
- Takes into account households' differential access to resources
- Holistic approach requiring a multidisciplinary lens

Limitations

- Indicators are diffusive and all different in scope
- Livelihoods are processes thus not comparable
- Ignore the effect of prices and their risks †Barrett and Reardon (2000)

Further Reading



R. Chambers

Rural Development: Putting the Last First
Longman. 1983.



R. Chambers and G.R. Conway

Sustainable rural livelihoods: practical concepts for the 21st century
IDS Discussion Paper 296. 1991.



F. Ellis

Rural Livelihoods and Diversity in Developing Countries.
Oxford University Press. 2000.



L. De Haan and A. Zoomer

Exploring the Frontier of Livelihood Research
Development and Change. 2005.



L. Olsson et al.

Livelihoods and poverty

In Climate Change 2014: Impacts, Adaptation, and Vulnerability. Part A: Global and Sectoral Aspects. Contribution of Working Group II to the Fifth Assessment Report of the Intergovernmental Panel on Climate Change. 2014.



F. Nunan

Understanding Poverty and the Environment: Analytical frameworks and approaches
Taylor & Francis. 2015.



I. Scoones

Sustainable Livelihoods and Rural Development
Practical Action Publishing. 2015.