

# Introduction to Sustainability: Frameworks and Indicators

## The Sustainable Livelihoods Framework

T. Berchoux & Dr. C.W. Hutton

**M.Sc. Sustainability**  
14 October 2016

---

D E C C M A



Overview of the presentation

- ① Livelihood thinking and the SLF
- ② SLF in practice
- ③ Short practical
- ④ Discussion

## Emergence

- Mid 80's †Chambers (1983), Chambers & Conway (1991), Scoones (1998)
- Top-down approach of poverty in development discourses
- Rural dwellers rely on a multitude of activities for their income

## Definition

“System that gathers capabilities, assets and activities of one household in order to achieve its means of living.”

Chambers and Conway, 1991

## Household as the reference unit for decision-making

- Shared residence and meals
- Joint decisions over resource allocation and income pooling

## Emergence

- Mid 80's †Chambers (1983), Chambers & Conway (1991), Scoones (1998)
- Top-down approach of poverty in development discourses
- Rural dwellers rely on a multitude of activities for their income

## Definition

“System that gathers capabilities, assets and activities of one household in order to achieve its means of living.”

Chambers and Conway, 1991

## Household as the reference unit for decision-making

- Shared residence and meals
- Joint decisions over resource allocation and income pooling

## Emergence

- Mid 80's †Chambers (1983), Chambers & Conway (1991), Scoones (1998)
- Top-down approach of poverty in development discourses
- Rural dwellers rely on a multitude of activities for their income

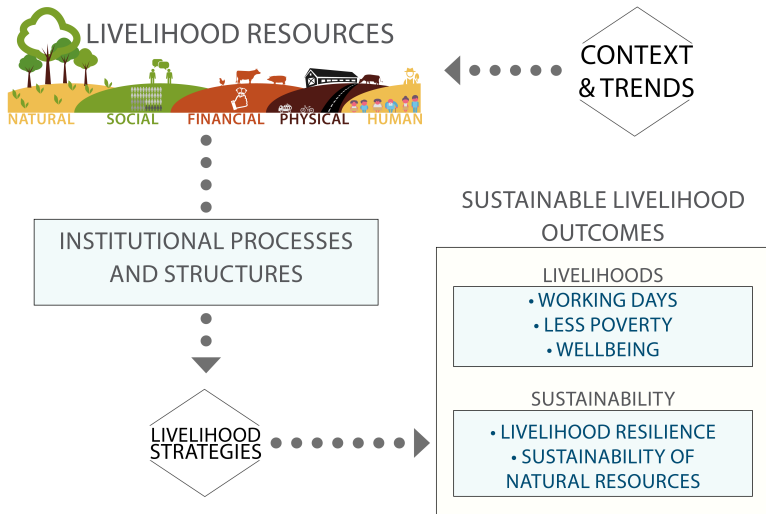
## Definition

“System that gathers capabilities, assets and activities of one household in order to achieve its means of living.”

Chambers and Conway, 1991

## Household as the reference unit for decision-making

- Shared residence and meals
- Joint decisions over resource allocation and income pooling



## Qualitative

- Semi-structured interviews *x13*
  - ▶ Public Institutions
  - ▶ Universities
  - ▶ Programmes and NGOs

⊙ State level
- Participatory Rural Appraisals *x10*
  - ▶ Resource map    Social map    Wealth ranking    Seasonal calendar
  - ▶ Impact chain of natural hazards    Photovoice

⊙ Community level
- Seminars for validation and feedback
- Political economy analysis

## Quantitative

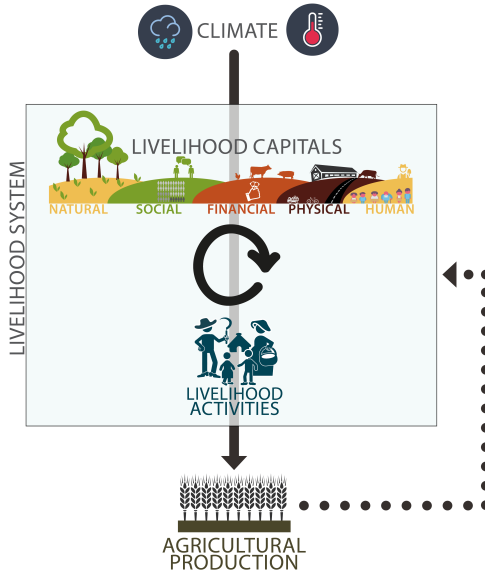
## Qualitative

## Quantitative

- Census data and OSM
  - ▶ Maximum Likelihood Factor Analysis for building indices
  - ▶ Data clustering
- Remote sensing
  - ▶ Climate variability
  - ▶ Agricultural stresses



Adapted conceptualisation



Identify one additional indicator to each capital

## Natural capital

- Agricultural land
  - ▶ Size of land per household
  - ▶ Ownership status
  - ▶ Characteristics
  - ▶ Irrigation
- Open-water resources
- Forest resources

## Physical capital

- Road connectivity
- Proximity to an outlet
- Access to productive assets

## Financial capital

- Protective assets
- Access to financial services

## Human capital

- Male workforce availability
- Skills of household members
- Access to health facilities

## Social capital

- Social networks
- Castes ratio

Identify one advantage and one disadvantage of the SLF.

### Strengths

- Focus on what households have, their needs and their interests
- Takes into account households' differential access to resources
- Holistic approach requiring a multidisciplinary lens

### Limitations

- Indicators are diffusive and all different in scope
- Livelihoods are processes thus not comparable
- Ignore the effect of prices and their risks [†Barrett and Reardon \(2000\)](#)



**R. Chambers**

Rural Development: Putting the Last First  
*Longman*. 1983.



**R. Chambers and G.R. Conway**

Sustainable rural livelihoods: practical concepts for the 21st century  
*IDS Discussion Paper 296*. 1991.



**F. Ellis**

Rural Livelihoods and Diversity in Developing Countries.  
*Oxford University Press*. 2000.



**L. De Haan and A. Zoomer**

Exploring the Frontier of Livelihood Research  
*Development and Change*. 2005.



**L. Olsson et al.**

Livelihoods and poverty  
*In Climate Change 2014: Impacts, Adaptation, and Vulnerability. Part A: Global and Sectoral Aspects. Contribution of Working Group II to the Fifth Assessment Report of the Intergovernmental Panel on Climate Change*. 2014.



**F. Nunan**

Understanding Poverty and the Environment: Analytical frameworks and approaches  
*Taylor & Francis*. 2015.



**I. Scoones**

Sustainable Livelihoods and Rural Development  
*Practical Action Publishing*. 2015.